

Morticer & Accessories

Complete Morticer

| Description | Order Ref |
|--|-----------|
| Standard Morticer complete with 3 carbide cutters (CWB19, CWB22 & CWB25) | JIG1 |
| Offset Morticer complete with 3 carbide cutters (CWB19, CWB22 & CWB25) | JIG2 |

Carbide Tipped Mortice Wood Cutters

| Size | Order Ref | Size | Order Ref |
|----------------------------|-----------|----------------------------|-----------|
| 16.2mm ($\frac{5}{8}$ " | CWB16 | 23.8mm ($\frac{15}{16}$ " | CWB24 |
| 17.5mm ($\frac{11}{16}$ " | CWB18 | 25.4mm (1" | CWB25 |
| 19.0mm ($\frac{3}{4}$ " | CWB19 | 26.0mm ($1\frac{1}{32}$ " | CWB26 |
| 20.0mm | CWB20 | 27.0mm ($1\frac{1}{16}$ " | CWB27 |
| 20.6mm ($\frac{13}{16}$ " | CWB21 | 28.6mm ($1\frac{1}{8}$ " | CWB29 |
| 22.2mm ($\frac{7}{8}$ " | CWB22 | 31.8mm ($1\frac{1}{4}$ " | CWB32 |
| 23.0mm | CWB23 | | |

Plunging Cutters

| Size | Order Ref | Size | Order Ref |
|------------|-----------|---------------------------|-----------|
| 17.6mm | PD18 | 29.0mm | PD29 |
| 23.0mm | PD23 | 31.8mm ($1\frac{1}{4}$ " | PD32 |
| 25.4mm (1" | PD25 | | |

Aluminium Cutters

| Size | Order Ref | Size | Order Ref |
|--------------------------|-----------|---------------------------|-----------|
| 16.2mm ($\frac{5}{8}$ " | NAB16 | 25.4mm (1" | NAB25 |
| 19.0mm ($\frac{3}{4}$ " | NAB19 | 31.8mm ($1\frac{1}{4}$ " | NAB32 |
| 22.2mm ($\frac{7}{8}$ " | NAB22 | | |

Spare Parts

| Description | Order Ref |
|--|-----------|
| Offset Housing Kit | DBB/HK/O |
| Housing Kit c/w fixings (Doors up to 55mm) | DBB/HK |
| Housing Kit c/w fixings (Doors 55mm+) | DBB/HK/S |
| Standard Shaft (Locks up to 100mm) | JIG/SS |
| Long Shaft (Locks up to 185mm) | JIG/LS |
| Extra Long Shaft (Locks up to 265mm) | JIG/XXLS |
| Pair of extra long threaded clamp screws | DBB/LCS |
| 6 Set Screws & Allen Key | DBB/GS |
| Plastic Carrying Case | DBB/CC |
| Set of 4 Rubber Pads | DBB/SOP |

Small Bore Kit

| Description | Order Ref |
|-----------------------------------|-----------|
| Housing kit (inc spanners) | DBB/SB/HK |
| Shaft and depth stop | DBB/SBS |
| Carbide tipped wood cutter 13.2mm | CWB13 |
| Carbide tipped wood cutter 14.6mm | CWB15 |

Long Drill Kit

| Description | Order Ref |
|----------------------------------|-------------|
| Long Drill Adapter | DBB/LD/A |
| Long Drill Adapter (hinge entry) | DBB/LD/A/HE |
| 10mm x 950mm long, wood drill | 10950 |
| 10mm x 1250mm long, wood drill | 101250 |

Technical Data

Drill requirements – 13mm ($\frac{1}{2}$ "

Chuck, recommended speed 2,000 - 3,000rpm

Standard shaft depth – 90mm (100mm without stop)

Long shaft depth – 170mm (180mm without stop)

Door thickness Standard Morticer – max opening 55mm

Door thickness Standard Morticer with DBB/HK/S Special Housing – max opening 80mm

Door and Frame Width Offset Morticer – max opening 95mm

ST | 5 MIN. MORTICER | 20.09.17 | V4

Souber Tools Ltd., Unit 4 Millennium Court, Buildwas Road, Neston, Cheshire CH64 3UZ, UK
 Tel: +44 (0) 151 353 1199 Fax: +44 (0) 151 353 0331
 email: info@morticer.com web: www.morticer.com

Souber Tools® 5 minute MORTICER

Includes faster
carbide cutters,
for wood
morticing.

The choice of locksmiths

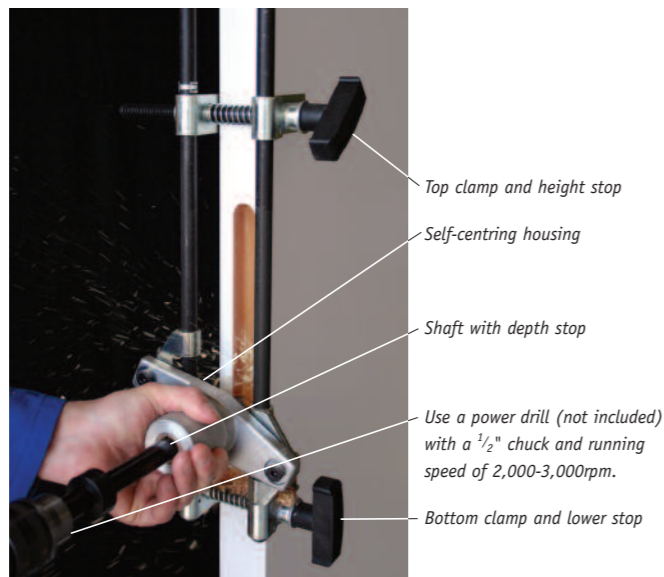


Perfect lock fitting every time with the DBB Morticer

Used and acclaimed by locksmiths and builders alike, the DBB morticer has proved itself an invaluable tool for anyone regularly fitting mortice locks.

Features

- Cuts a mortice for the body and face-plate
- Fast and accurate, saves you time and money.
- Carbide wood cutters.
- The self-centring jig cuts marking-up time.
- Vertical guides, height and depth stops mean that you cannot overrun the cut area.



The side slide attachment for offset morticing

Available as a complete kit, or as an upgrade for your standard morticer, this attachment has been developed for European-style rebated doors with off-centre lock mortices.

Using the same vertical bar & clamp system, the attachment has a side sliding shaft housing, so that mortices can be cut off-centre.

This flexibility allows you to cut hinge recesses and the mortice for the strike plate on door frames less than 95mm thick.



Carbide Tipped Mortice Cutters

Compared to the previous design, these improved carbide-tipped mortice cutters increase the cutting speed by upto 50% and keep their sharpness longer.

The simplified, screw-on 'anti-lock' design enables the cutter to be released quickly using the spanner provided. Twelve cutters are available packed in tough blue boxes.

Aluminium Cutters

With specially designed cutters, aluminium doors present no problems for the solidly constructed DBB Morticer.

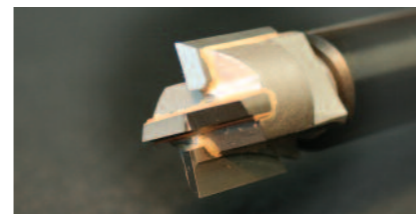
Four cutter sizes provide you with all the range you need to cut a lock slot in an aluminium door.

Long Drill Kit

The **LONG DRILL KIT** has been specifically designed for the easy installation of electric lock cables through wooden doors, from lock to hinge.

After cutting the lock mortice, the long drill adapter kit converts a morticer into a guide for a long drill system. Special geometry helps to keep the drill 'on line' with minimal effort.

Leading in its field, the **LONG DRILL KIT** is quick, accurate and easy to use.



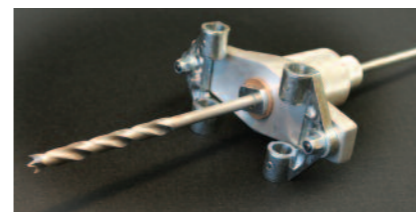
Carbide Tipped Mortice Cutter



Aluminium Door Cutter



Long Drill Adapter

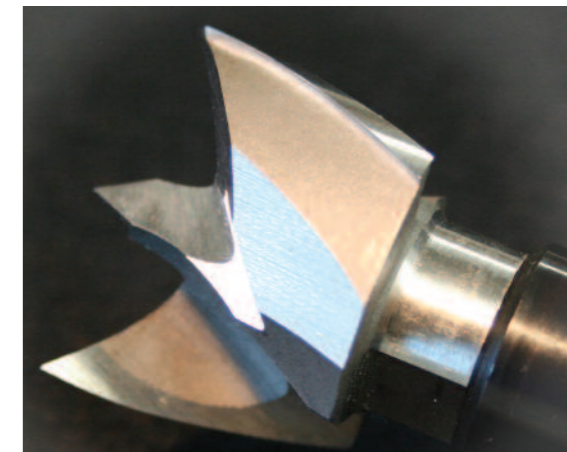


Long Drill Adapter installed on housing



Plunging Cutters

These new cutters are ideal for installers who need perfectly drilled true holes. Ideal for the quick installation of Tubular Latches, Deadbolts, Concealed Door Closers etc. The range of 4 sizes of 'Plunging Cutters' are designed for locks where perfect installation is an issue. Made from High Speed Steel, these very effective 3 point plunging drills are a real bonus for those wanting to solve installation problems.



Plunging Cutter.

Included in the price

Every morticer comes complete with a heavy duty case, the jig of your choice, self centring or adjustable, stops, drive shaft, three wood cutters and the instruction manual.

User friendly instructions

Our easy to follow instruction manual will help you get the best out of the DBB morticer with clear step-by-step illustrations.



The complete Mortice Kit included in the price.

Additional and special accessories

Any part of the morticer can be replaced individually and in addition we can offer 15 sizes of wood cutters, five sizes of aluminium and plunging cutters and the special kits for non-standard locks and applications.